



PETE VIZZA/THE TRIBUNE-DEMOCRAT

Eileen Holsopple, membership chairwoman, and Norma Livingston, secretary, stand in front of the Holsopple Historical Society's project — transformation of a former train depot into a museum. It will include a model of the line between Johnstown and Rockwood.

Holsopple preparing to come aboard

By KIRK SWAUGER

TRIBUNE-DEMOCRAT SOMERSET BUREAU

HOLLSOPPLE — A railroad museum containing a model of the historic line between Rockwood and Johnstown is expected to be completed by next year in a restored train station in town.

The Holsopple Historical Society has started to restore the station, assemble the model railroad and collect memorabilia.

The society is considering trying to have the station placed on the national historic register.

"It's going to take us awhile, but we've gotten a lot accomplished in the past year," society membership chairman Eileen Holsopple said.

The station has sat abandoned and deteriorating for decades before being acquired by the historical society last year.

It is being painted its original colors of brilliant red trimmed in yellow.

"The color is pretty outstanding after all that drabness for all these years," Holsopple said.

The society wants to replace the roof on the center by winter.

A tar-paper roof may be temporarily laid in order for the society to raise enough money to install a slate roof, the original type of covering on the station.

For the station to be placed on the national register, "we have to put the building back exactly how it was. It had a slate roof, which we've found out is very expensive," Holsopple said.

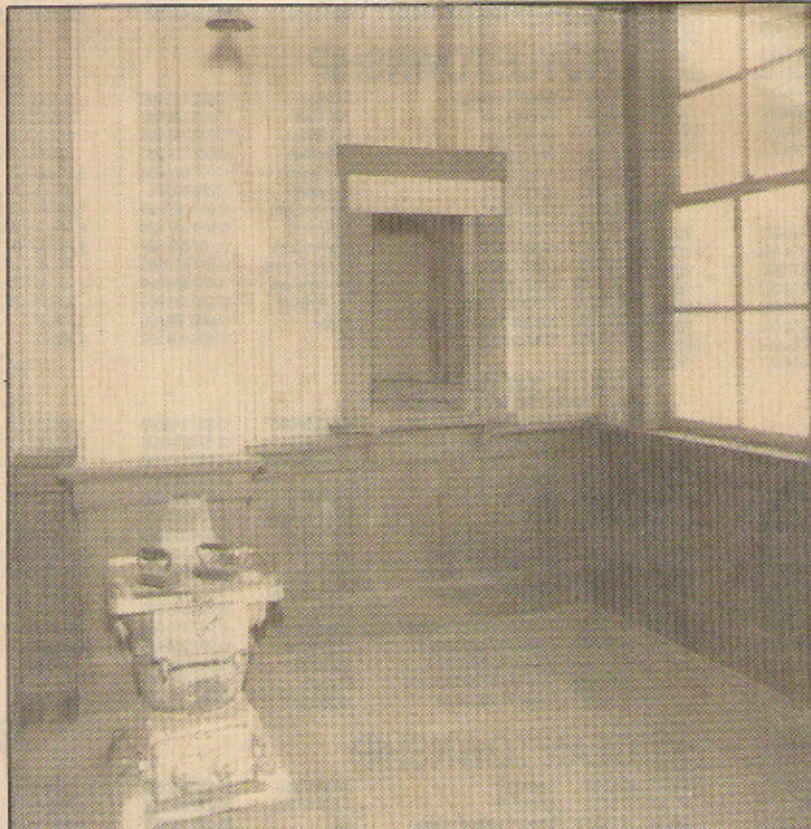
The society has been relying on volunteers to clean and paint the station.

"We don't even have a budget," Holsopple said.

A pot-belly stove, railroad lanterns, an Erie Railroad conductor's bill, and other artifacts already have been donated for the museum, and the society is searching for additional memorabilia.

Another potential use for the station is connected to the proposed white-water rafting in the Stonycreek Gorge. Holsopple said no definite ideas have surfaced to link the station to rafting, but the society is looking at the possibilities.

"If there's any way we can fit in, we're ready," she said.



This is the current scene in the ticket and waiting area of the train depot being restored in Holsopple.